



Directions to Battle Ground Summer Recreation Facilities

BGSR facilities are located **behind Battle Ground Middle School**, located at 511 Main Street in Battle Ground.

From the south: Take State Road 43 north to State Road 225, which is about 1.25 miles north of the intersection of I-65 and State Road 43.

Turn right onto State Road 225 towards Battle Ground. Follow SR225 into Battle Ground (about 1.5 miles) and cross the railroad tracks.

When you cross the railroad tracks, veer to the left. You are now on Main Street.

Follow Main Street about ½ mile to Battle Ground Middle School, which is on the left. (Battle Ground Elementary is the first school you will pass).

The fields are located behind the school. Parking is available in the blacktopped lot by the school or in the grass close to the playing fields.

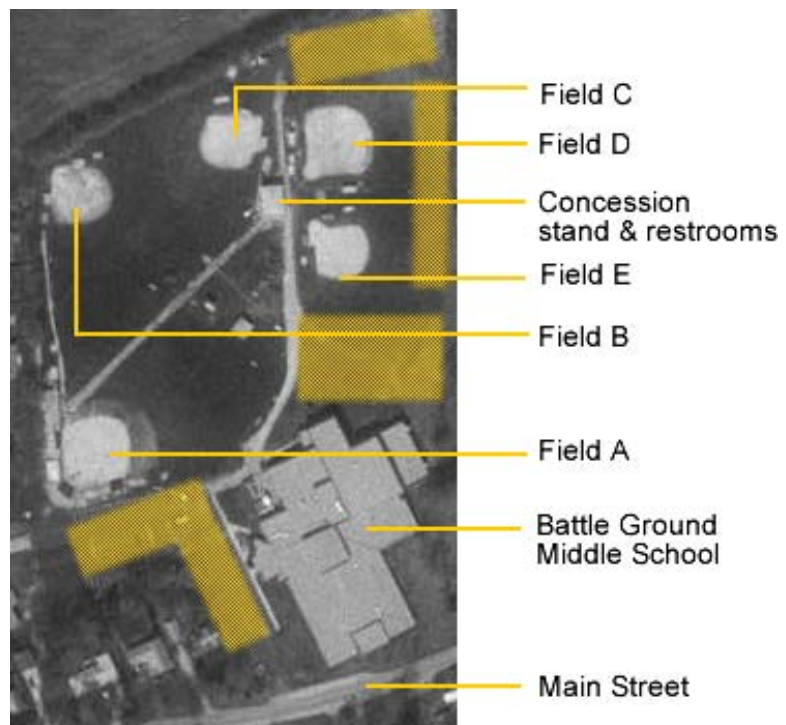
From the north: Take State Road 43 south to State Road 225, which is about ½ mile south of the intersection of State Road 43 and County Road 800 North in Tippecanoe County.

Turn right onto State Road 225 towards Battle Ground. Follow SR225 into Battle Ground (about 1.5 miles) and cross the railroad tracks.

When you cross the railroad tracks, veer to the left. You are now on Main Street.

Follow Main Street about ½ mile to Battle Ground Middle School, which is on the left. (Battle Ground Elementary is the first school you will pass).

The fields are located behind the school. Parking is available in the blacktopped lot by the school or in the grass close to the playing fields.



Parking areas shown in shaded yellow.